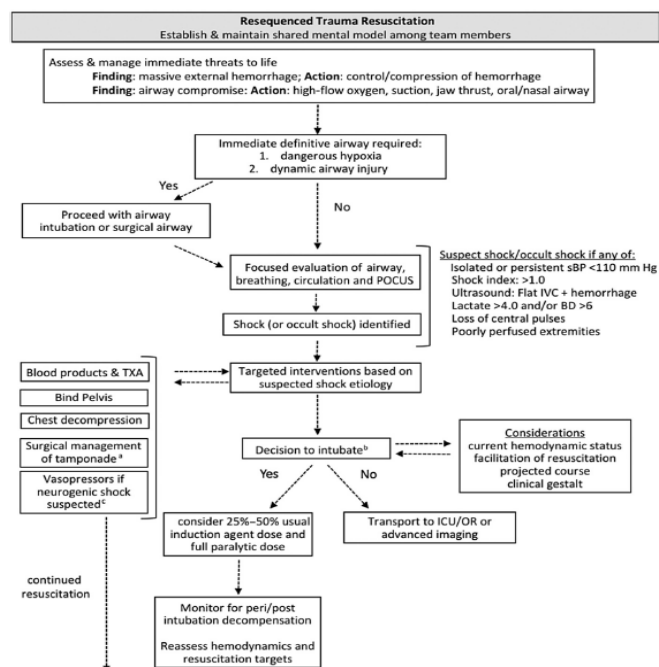


Traumeuddannelse – 16 artikler, ja faktisk en hel bog!

Denne udgave en e-journal club akut- og præhospital behandling indeholder ikke blot én, men hele 16 anbefalinger – masser af god læsning når julefreden bliver for meget.

Den aktuelle udgave af **Emergency Medicine Clinics of North America** er en lækkerbissen for traumefolket. Seksten velskrevne artikler om moderne traumebehandling fra A-E udgør tilsammen en rationel modernisering af kassetænkningen fra ATLS.

Skal du vælge i overflødhedshornet, vil jeg anbefale at læse Resuscitation Resequenced: A Rational Approach to Patients with Trauma in Shock og Airway management i trauma. Her introduceres en moderne og evidensbaseret algoritme for en primære modtagelse og resuscitation af den kritisk syge traumepatient.



Artiklen "Airway in Trauma" er det mest sammenhængende og intelligente jeg har læst om luftvejshåndtering i mange år. Der gives eksempler på hyppige årsager til vanskelig luftvej hos traumepatienter og bud på mulige løsninger, hvor innovative teknikker som [Suction Assisted Laryngoscopy and Airway Decontamination](#) (SALAD) og [Delayed Sequence Intubation](#) (DSI) integreres.

Table 1
Predictors of difficult airway management in trauma

Difficult Airway	Trauma Related Difficulty	Approach
Difficult laryngoscopy and intubation		
Limited mouth opening/ jaw displacement	Collar/improper MILS Trismus	Open collar/ear-muff MILS
Inability to position	MILS	ELM/bougie/VL
Blood/vomitus	Facial injuries/full stomach, delayed gastric emptying	2 suctions/SALAD approach FONA
Penetrating or blunt neck trauma	Disrupted or distorted airway	Awake primary FIE; if not feasible RSI VL-assisted FIE
Difficult BVM		
Limited jaw thrust	Mandibular fractures	Early SGA use
Poor seal	Facial injuries with swelling, disruption	Early SGA use
Blood/vomitus	Facial injuries/full stomach, delayed gastric emptying	2 suctions/SALAD approach FONA
Penetrating or blunt neck trauma	Distorting subcutaneous emphysema, disrupted airway	Passive oxygen delivery/ minimize PPV
Difficult SGA use		
Blood/vomitus	Facial injuries/full stomach, delayed gastric emptying	2 suctions/SALAD approach FONA
Penetrating or blunt neck trauma	Distorted/disrupted airway	Direct visualization FIE/FONA, low tracheotomy
FONA		
Penetrating or blunt neck trauma	Distorted/disrupted airway CTM not accessible or injury at or below CTM	Low tracheotomy

Abbreviations: BVM, bag-valve-mask; CTM, cricothyroid membrane; ELM, external laryngeal manipulation; FIE, flexible intubating endoscope; FONA, front of neck airway; MILS, manual inline stabilization; PPV, partial-pressure ventilation; RSI, rapid sequence intubation; SALAD, suction-assisted laryngoscopy airway decontamination; SGA, supra-glottic airway; VL, video laryngoscopy.